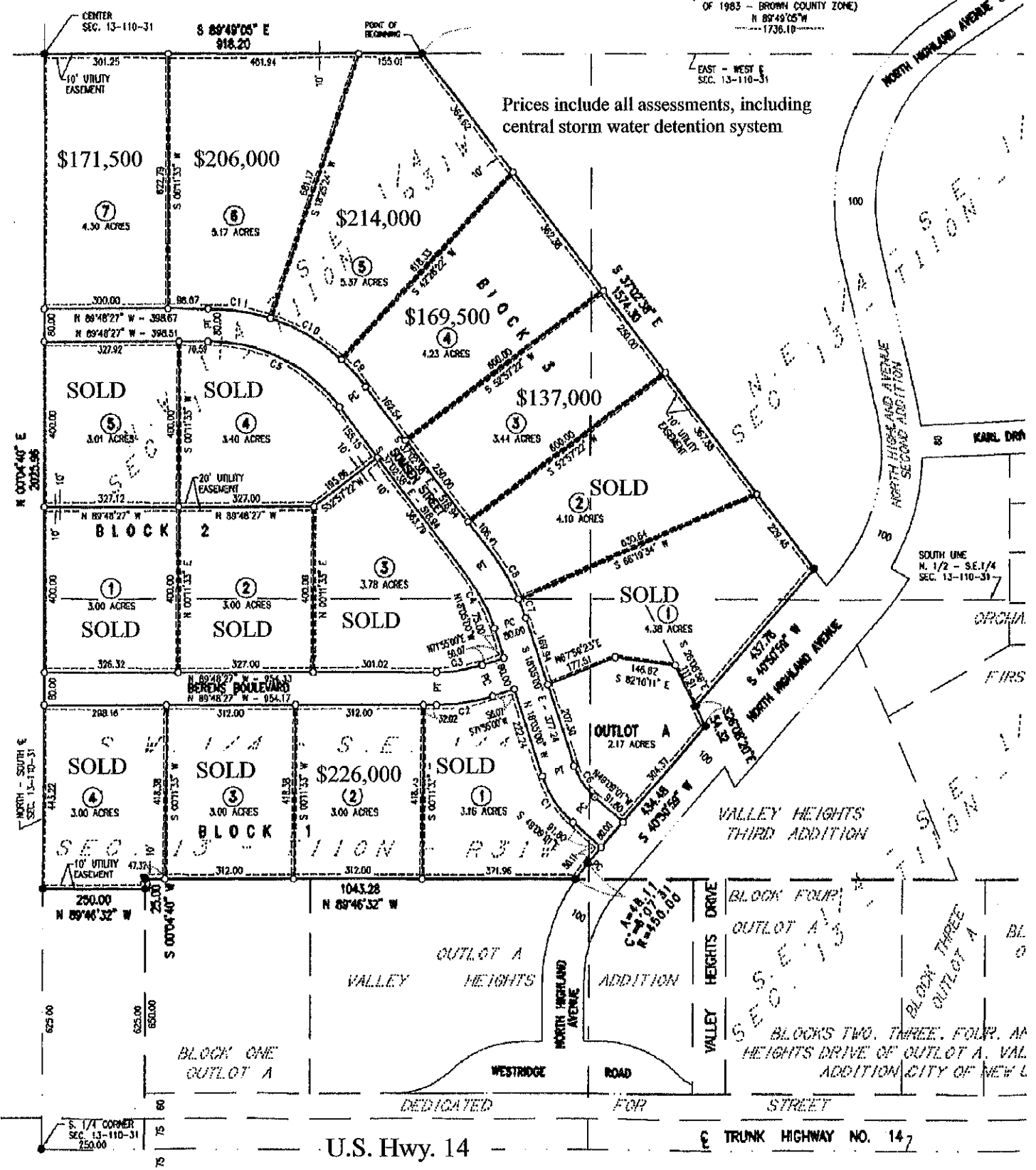


Airport Industrial Park

(MINNESOTA COUNTY COORDINATE SYSTEM
OF 1983 - BROWN COUNTY ZONE)
N 89°49'05"W
-----1736.10-----

EAST - WEST E
SEC. 13-110-31

Prices include all assessments, including
central storm water detention system



U.S. Hwy. 14

Trunk Highway No. 147